



www.victorysportstours.com

France #2

Field Hockey Tour

Paris & Normandy

10 Days / 8 Nights

SUGGESTED PROGRAM

IMPORTANT: The dates and times of the activities below will likely be adjusted to accommodate your game schedules, which will be finalized in the weeks prior to your team's arrival at its destination. All times are approximate and may vary according to flight schedules and other logistical factors.

ALL FIELD HOCKEY ACTIVITIES ARE HIGHLIGHTED IN RED.

Day 1 **USA – FLIGHTS**

Fly overnight to Paris. Possible change of plane enroute. Dinner and breakfast served aloft.

Day 2 **PARIS**

(D)

Flight arrives at Paris Airport. Meet your Tour Manager.

Transfer by private motorcoach to Paris, one of the world's greatest cities and perhaps the Most cosmopolitan and elegant world capital.

Check into your Three-Star Hotel.

PRACTICE SESSION at an Astro turf field to warm up for the next few days.

Rest of the afternoon free to explore the neighborhood around your hotel.

Overnight: Paris

Day 3 **PARIS**

(B,D)

Paris City Tour



Arc de Triomphe



Notre Dame Cathedral



Place de la Concorde

- **Arc de Triomphe** – Commissioned by Napoleon in 1806 to honor French military victories.
- **Notre Dame Cathedral** – One of Europe's and the world's most important houses of worship
- **Place de la Concorde** – The largest square in Paris with deep history of the French Revolution
- **Champs-Élysées** – 1.2-mile-long boulevard that is "the most beautiful avenue in the world".

MATCH # 1 vs. a FRENCH FIELD HOCKEY TEAM

Aftermatch meal with opposing team/coaches

Overnight: Paris

Day 4 **PARIS**

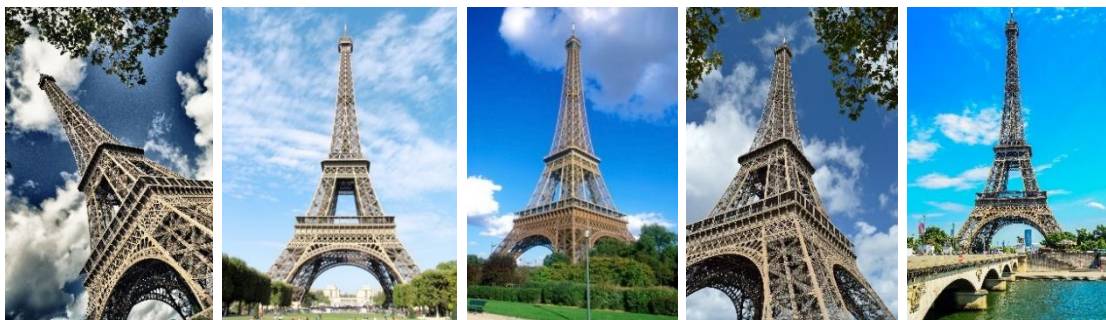
(B,D)

Latin Quarter

Explore the vibrant and urban university campus filled with entertainment, world class food and Medieval historical monuments.

- **The Pantheon** – Built to be a church then later turned into a mausoleum, this recognizable monument can be seen from across Paris
- **The Grand Mosque of Paris** – Soak in the architecture, escape from the bustle of the crowd, sip some tea in the teahouse and relax in the courtyard

Eiffel Tower



Ascend this 1,050 ft. high tower, one of the most-visited monuments in the world for breathtaking panoramic views of the Paris city landscape, including the **River Seine** and the many elegant landmarks gracing its shores.

Overnight: Paris

Day 5

PARIS

(B,D)

Bike Tour – “**Banks of the Seine**” (bike rentals and guide included)



Enjoy a guided bicycle tour along the River Seine as it winds through the unique neighborhoods of Paris.

French Pastry Class (optional: not included)

Take a class in pastry making from world renown Parisian chefs who have perfected the art
Overnight: Paris

Day 6

PARIS

(B,D)

Seine River Cruise (boat tickets included)



Enjoy a Cruise on the River Seine through the heart of Paris with views of the Eiffel Tower, Notre Dame Cathedral and other landmarks.

MATCH #2 vs. a FRENCH FIELD HOCKEY TEAM

Aftermatch meal with opposing team/coaches

Overnight: Paris

Day 7

PARIS

(B,D)

Louvre Art Museum



Perhaps the world's greatest museum, the unending displays of works of breathtaking beauty and magnificence will astound you.

- **Mona Lisa** – The world's most famous painting by Leonardo da Vinci resides inside the Louvre.
- **Works by Master Artists** - Raphael, Titian, El Greco, Velazquez, Rembrandt, Rubens, De la Croix, and many others.

Le Marais

Very walkable neighborhood with cafés, restaurants, and shops that is popular with younger Parisians and visitors alike.

- **Place de Vosges** – The oldest planned square in Paris boasts gorgeous archways, fountains and gardens. Completed between 1605 and 1612 this square was formerly called Place Royale
- **Musee National Picasso** – Walk through this mansion dedicated to the iconic artist. More than 5,000 paintings, sculptures and sketches are on display

Overnight: Paris

Day 8

NORMANDY

(B,D)

Normandy WWII Commemorative Landmarks – Full-Day Tour



Utah Beach Memorial



American Military Cemetery



Omaha Beach Memorial

Transfer from Paris to visit landmarks marking the sacrifices of American and Allied servicemembers in the World War II landings on the beaches of Normandy on June 6, 1944.

- **Omaha Beach** – One of five beach landing sectors of the amphibious assault where between 5,000 and over 6,000 Allied troops were killed, wounded, and missing on D-Day. Visit the Omaha Beach Memorial memorializing their sacrifice.
- **Airborne Museum** – This facility commemorates the role of the American 82nd and 101st Airborne Division paratroopers who parachuted behind enemy lines during the Normandy invasion who also lost many members.
- **Normandy American Cemetery and Memorial** – 9,387 American military service members are buried here with a further 1,557 names inscribed on the Walls of the Missing. This is the most visited American military cemetery with over one million visitors per year with group visits possibly requiring advance registration.

Return to Paris.

Dinner at your Hotel or nearby Restaurant.

Transportation: Private, such as Train or Private Motorcoach

Overnight: Paris

Day 9

PARIS

(B,D)

Versailles Palace – Half-Day Tour



Located 14 miles southwest of Paris, today the Chateau is one of the most visited attractions in France. You will see the **Hall of Mirrors**, the **Grand Apartments** of the King and Queen, the **King's Bedchamber**, the **Trianon Palaces** and **Marie-Antoinette's Estate**.

MATCH #3 vs. a FRENCH FIELD HOCKEY TEAM
Aftermatch meal with opposing team/coaches

Overnight: Paris

Day 10

PARIS – USA

(B)

Fly back to the USA, arriving the same afternoon. Possible change of plane enroute.

Your European Adventure comes to a close with great memories to cherish for a lifetime !

TOUR INCLUSIONS:

Travel Services:

- Economy-class Air Transportation USA - Paris round-trip
- 8 nights at a Three-Star Hotel in Paris or near the playing fields
- Round-trip Airport / Hotel transfers by private motorcoach
- Breakfast and one other meal daily (lunch, dinner or post-match get-together with opposition, personal beverages not included)
- Paris City Tour with English-Speaking Guide
- Eiffel Tower - (admission included)
- Bike Tour - (bike rentals and guide included)
- Seine River Cruise (boat tickets included)
- Louvre Art Museum - (admission included)
- Normandy – Full-Day Tour including Omaha Beach Memorial, Airborne Museum and Normandy American Cemetery and Memorial (admissions included)
- Versailles Half-Day Tour - (admission included)
- Transfers for all of the above activities by public transportation or private motorcoach
- **Tour Manager** available as necessary in Europe and 24/7 access in case of emergency
- 24/7 Emergency Support from **Victory Sports Tours'** Operations Office

Field Hockey Program:

- **3 Games vs. French club / school / university teams**
- **1 Practice at the beginning of the tour to get warmed up for your games**
- **Opposition Matching Services**
- **Water at Games & Practices**
- **Round-trip transfers to above field hockey activities by private motorcoach**

Summary of Included Meals:

- 8 Breakfasts
- 8 other meals (lunches or dinners at hotel or restaurants, including 3 post-match get-togethers with opposing teams - personal beverages not included)

Tour Price:

Click on [Victory Sports Tours - Sample Tours](#) select your sport and find **France #2** for pricing

- One **FREE COACH'S TRIP** is included in all the above price ranges.
- Coach would share a twin room with a paying traveler and pay **only taxes/fees**.
- Tour Price is subject to increase if there are fewer than 20 paying travelers.
- Taxes/fees/fuel charge are subject to change according to government and airline increases.

Exchange Rate Protection:

- Tour prices are based on the current U.S. Dollar / foreign currency exchange rate.
- Price may vary if the exchange rate were to change significantly **before** we receive your first tour deposit.
- You will **not** be subject to any surcharge due to exchange rate increases that occur **after** we receive your first tour deposit.

Not Included:

- Any items not listed as included in the above sections under "TOUR INCLUSIONS"
- Passport fees - Passports are required to travel internationally
- Visa fees - If visas are required, typically in the case of non-US citizens
- Personal beverages at meals

- Uniform laundry - Your tour manager will assist you in finding laundromats (most hotels in foreign countries do not have laundry facilities)
- Tips for tour manager, city tour guides and motorcoach drivers (recommended **US\$ 25-30 per traveler** to cover all tour staff)
- Any fees imposed by the airlines at the airport for checked baggage that exceed the number of pieces allowed or size/weight allowances, such as Goalie Bags
- Travel insurance - We will offer you the option to purchase travel insurance through an independent travel insurance specialist
- Optional Activities as noted in the itinerary

Document Created: 2025-12-14